

F-Tool Clamping block, the bridge from Presetting to EDM drilling to EDM- and wire EDMing.

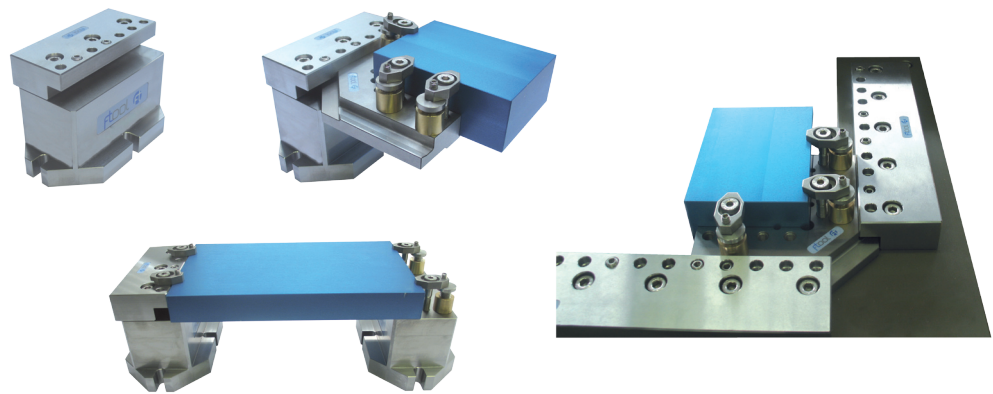


Clamping block

The Clamping block can be used as a basement on the EDM, EDM-drilling and Presetting machines. On the top surface the FT 01347 Basic Ruler 140 mm can be fitted. The clamping block is a high accurate clamping surface for workpieces and fixtures for RulerSet equipments.

Article no.	Article	Quantity	Weight	Code
FT 01945	Clamping block h80	1 piece	6.78 kg	B
FT 01347	FTool basic ruler 140 mm	1 piece	1.75 kg	W

Combination examples:



The Mini universal plate, to clamp thin plates in the FTool RulerSet

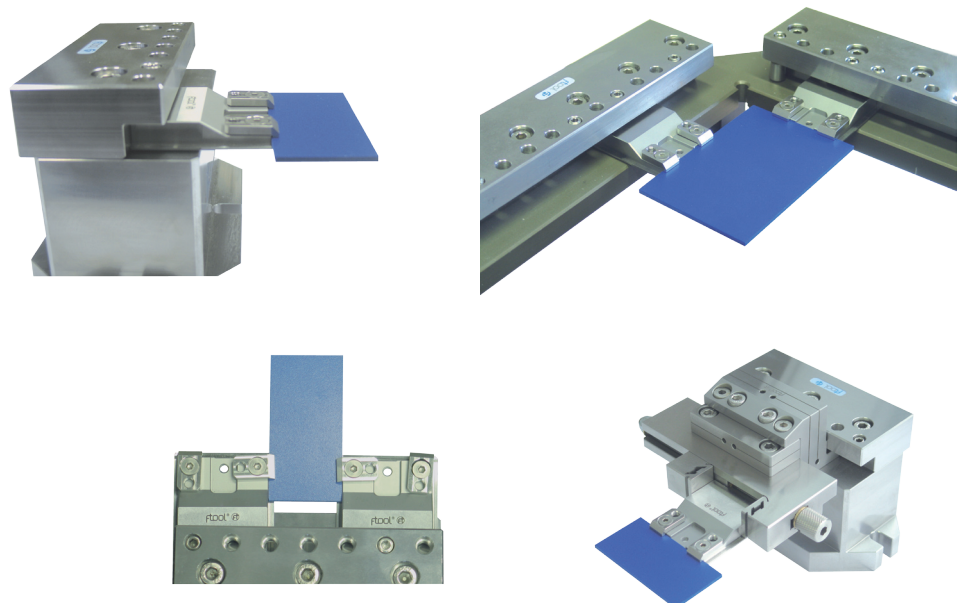


F-Tool Mini universal clamping plate

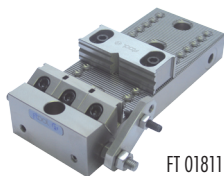
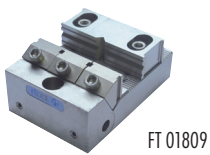
The Mini Universal clamping plate, to fix thin plates in the FTool RulerSet. The z-lip supports are just +2 mm above the 0-level to avoid any collision with the flushing nozzle. The z-lips on both sides of the clamping plate give a high flexible application range. The clamping plate can be mounted as a single-, or over the corner as a multifunctional clamping devise. The Mini clamping plate is delivered with two Mini brackets.

Article no.	Article	Quantity	Weight	Code
FT 01951	FTool Mini Universal clamping plate Z+2// 60 x 54 x 12 mm	1 piece	0.26 kg	W
FT 01952	Mini Bracket 22 x 13 x 3.8 mm	1 piece	0.05 kg	W

Combination examples:



F-Tool MultiClamp, with link to the RulerSet

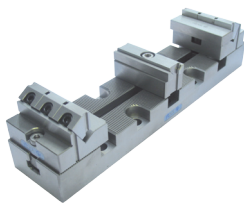
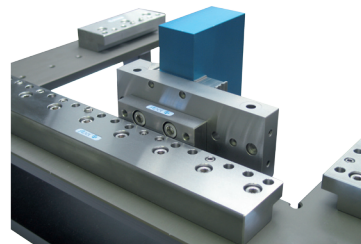
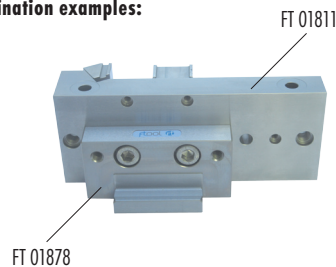


F-Tool MultiClamp 105 and 181

The F-Tool MultiClamp is a pull-down clamp with adjustable, hardened pull-down and stop jaws. It is corrosion-resistant and hardened. The stop jaw can be set every 2 mm in the tooth grid. The support surface is put up on 25 ± 0.01 mm. The F-Tool MultiClamp fits for the insert as a multiple clamp on the T-slot pallet, ITS/UPC pallet and square block. The maximum clamping range on the MultiClamp 105 is 48 mm, on the MultiClamp 181//124 mm. The clamp travel of the clamping jaw is 3 mm.

Article no.	Article	Quantity	Weight	Code
FT 01809	FTool PIN MultiClamp 105 x 72 mm B40, corrosion-resistant	1 piece	1.90 kg	P
FT 01811	FTool PIN MultiClamp 181 x 72 mm B40, corrosion-resistant	1 piece	2.94 kg	P
FT 01878	MultiClamp IF90°	1 piece	0.84 kg	W

Combination examples:

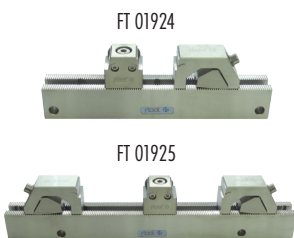
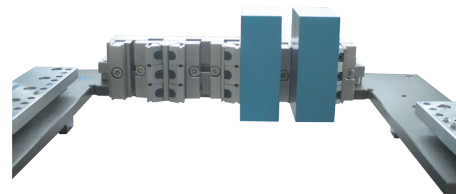
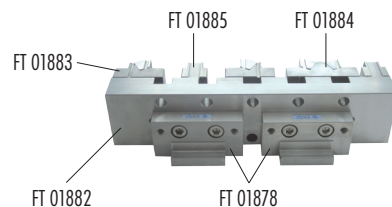


WEDM ClampingBeam B72

The MC railer set 320 B72 is a perfect, upgradable basic initial equipment for general multiple-clamping-jobs in the daily business. The hole grid 50 mm matches for the direct assembling on UPC pallets. Max. clamping power 10 - 15 KN

Article no.	Article	Quantity	Weight	Code
FT 01857	FTool MC Railer Set 320 B72	1 set	8.87 kg	P
FT 01878	MultiClamp IF90°	1 piece	0.84 kg	W

Combination examples:



WEDM ClampingBeam B28

The WEDM railer is prepared with a disc pull-down-system and a quickly adjustable clamping-slide. With the help of the basic rulers IF FT 01873 or with the two fixing holes $\varnothing 9$ D200, the railer can be clamped horizontal in the EDM wire cutting machine. Maximal holding capacity B220 B28 = 130 mm, B320 B28 = 2 x 0-88 mm or 1 x 0-230 mm

Article no.	Article	Quantity	Weight	Code
FT 01924	WEDM clamping beam 220B28 with sliding jaws B28WEDM	1 piece	1.80 kg	P
FT 01925	WEDM clamping beam 320B28 with sliding jaws B28WEDM	1 piece	2.70 kg	P
FT 01873	Basic Ruler IF100	1 piece	0.55 kg	W

Combination examples:

